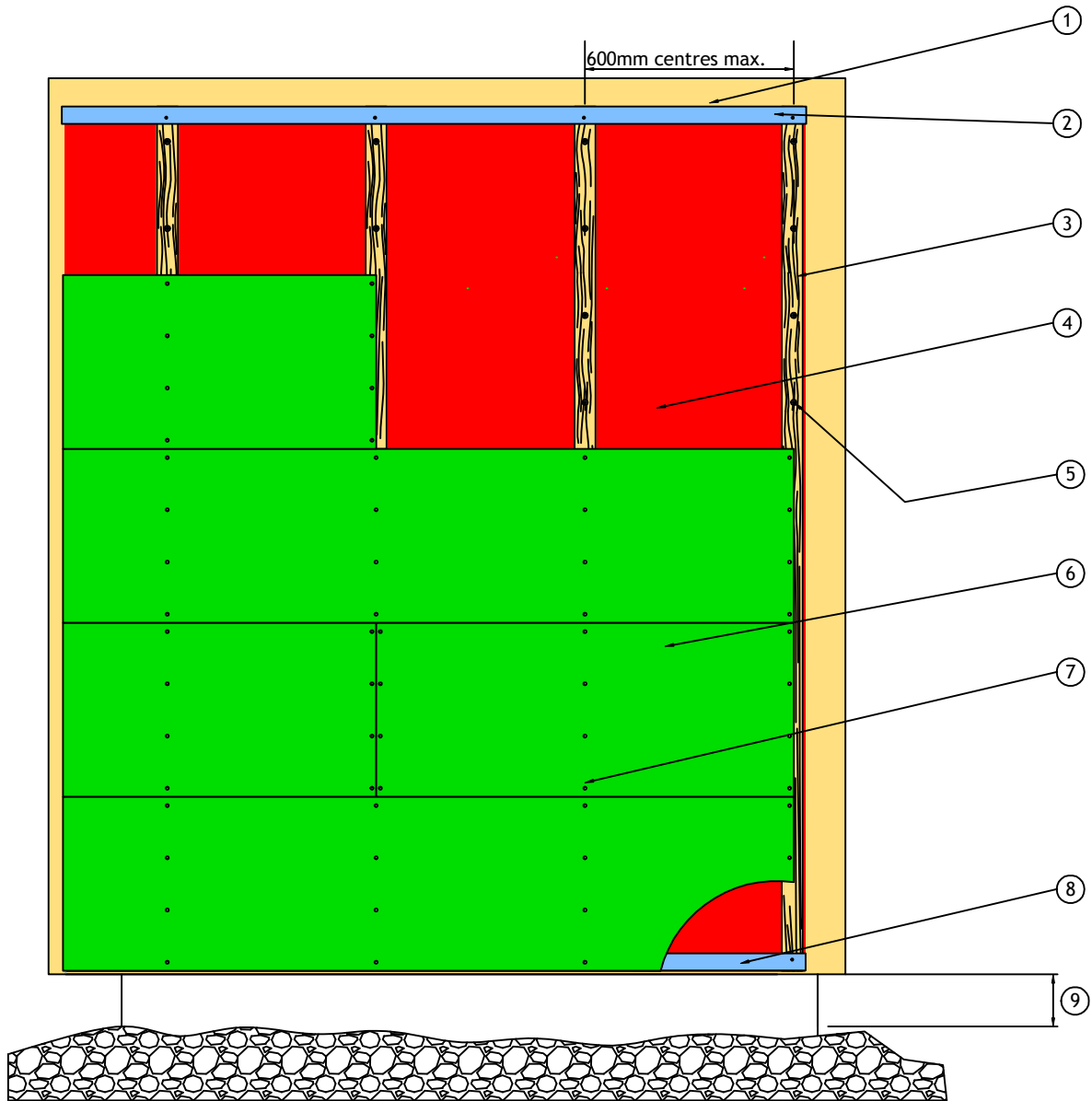


HardieWall™ System - General Arrangement Rainscreen on Timber Frame



- 1 Timber frame
- 2 Ventilated closure
- 3 Timber battens 47x47mm
- 4 Breather Membrane - only required for low density / poor quality brick/ blockwork. Check with designer
- 5 EJOT screw TKE - 4.8 x 100
- 6 HardieFloor® 19mm
- 7 51x2.8mm ring shank stainless steel nails
- 8 Ventilated closure
- 9 150mm Min.