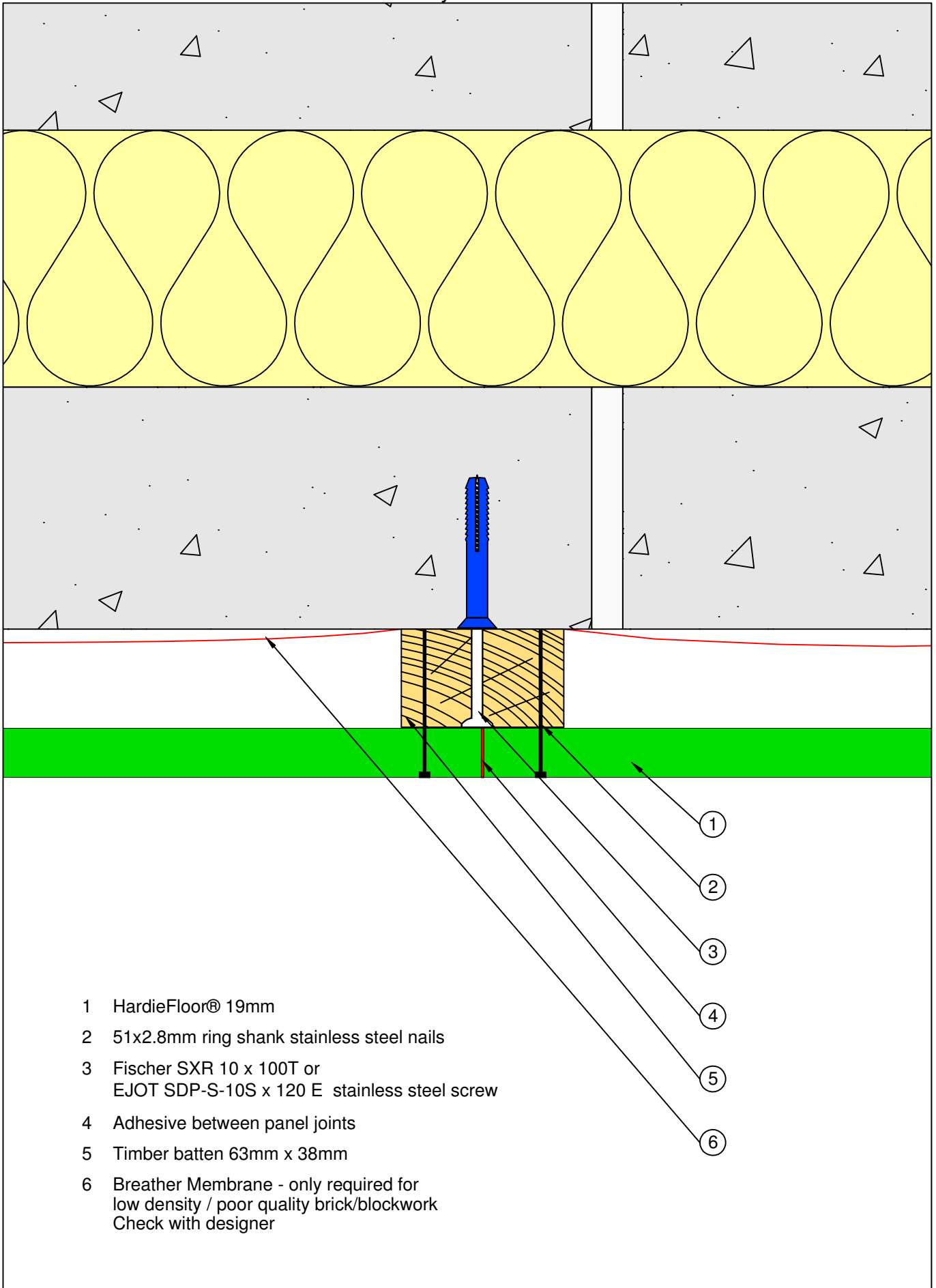


HardieWall™ System - Vertical Joint



- 1 HardieFloor® 19mm
- 2 51x2.8mm ring shank stainless steel nails
- 3 Fischer SXR 10 x 100T or
EJOT SDP-S-10S x 120 E stainless steel screw
- 4 Adhesive between panel joints
- 5 Timber batten 63mm x 38mm
- 6 Breather Membrane - only required for
low density / poor quality brick/blockwork
Check with designer