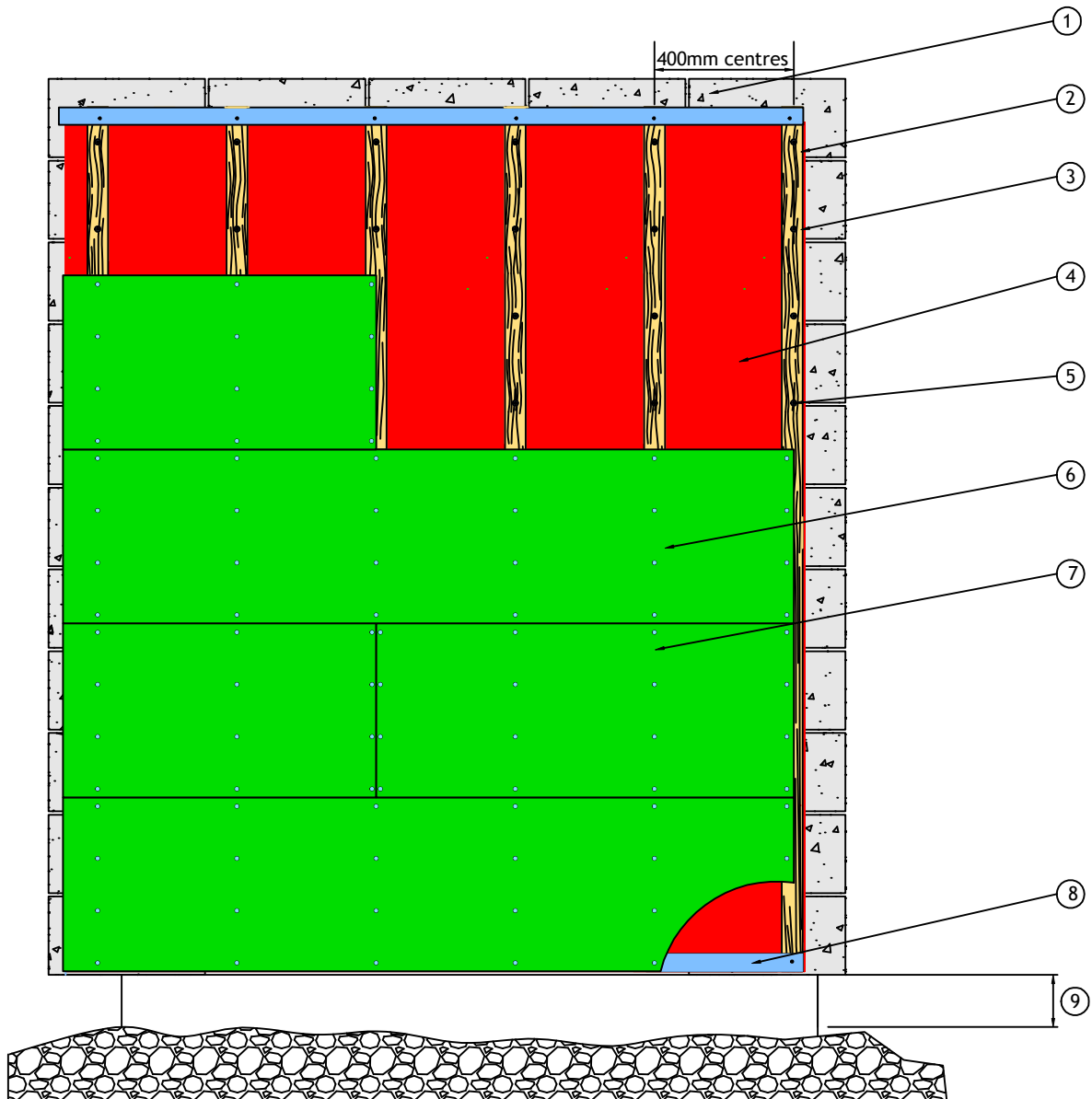


HardieWall™ System - General Arrangement Rainscreen to Masonry



- 1 Bricks / Masonry
- 2 Ventilated closure
- 3 Vertically installed 63mmx38mm timber battens
- 4 Breather Membrane - only required for low density / poor quality brick/blockwork. Check with designer
- 5 Fischer SXR 10 x 100T or EJOT SDP-S-105 x 120 E stainless steel screw
- 6 HardieFloor® 19mm
- 7 51x2.8mm ring shank stainless steel nails
- 8 Ventilated closure
- 9 150mm Min.